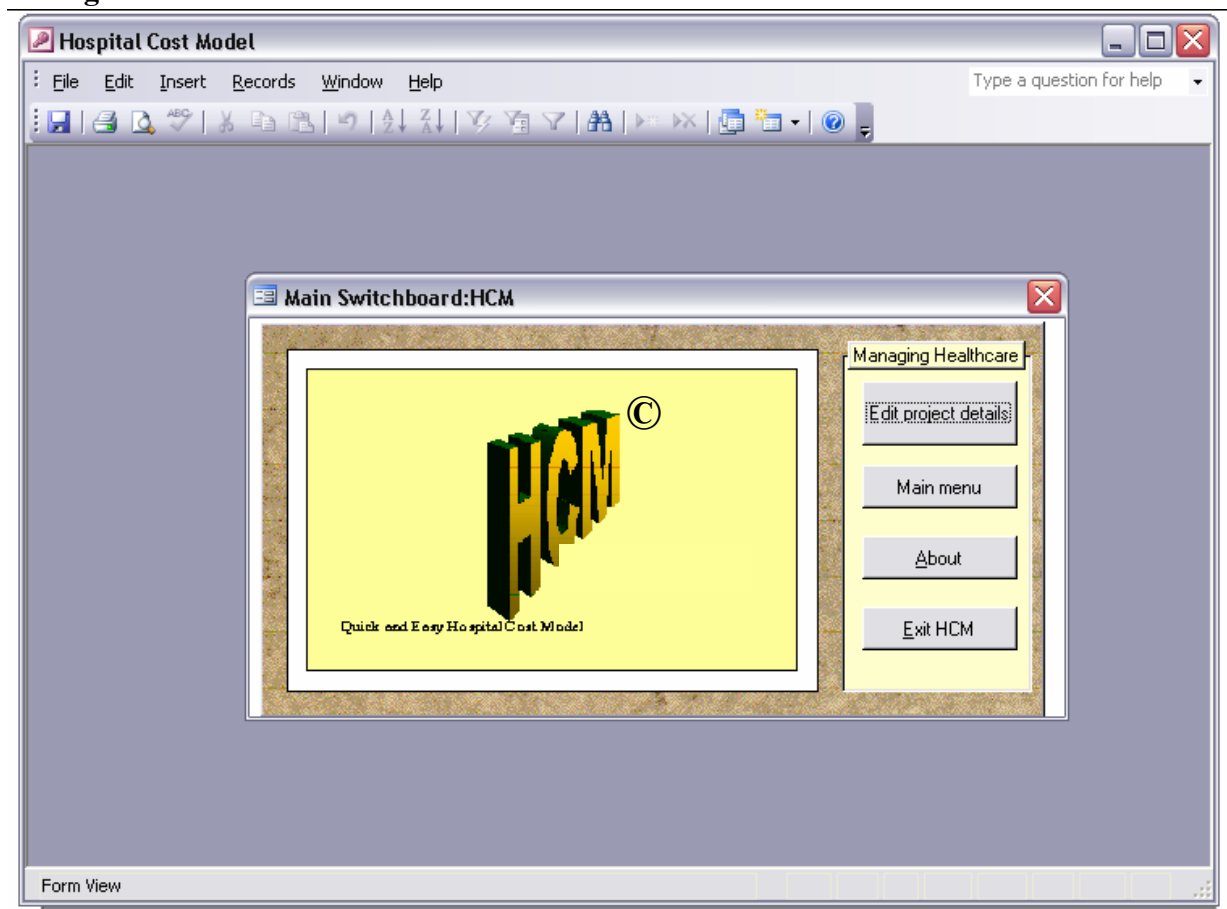


# 1. Description of the Hospital Cost Model System

## 1.1. Introduction

The Hospital Cost Model<sup>©</sup> (HCM) system, 2002 is based on the spreadsheet cost model concept. The software was conceptualised, designed and produced by [AIDInc](#) Consultant Sarah Adomakoh with support from Mr David Taylor Health Systems Advisor, PAHO. The system estimates total and unit costs of hospital services and also incorporates a comprehensive reports generator module for those hospital staff that previously found it difficult to proceed from the results generated by an excel spreadsheet model to meaningful presentation of results at hospital management level. The parameters are easily adapted, changed or modified to reflect changes in hospital infrastructure, therefore, it can also be used to plan contraction or expansion of services, refine service configuration or to project costs under varying circumstances of service activity or output

**Figure 1: HCM<sup>©</sup> Main Switchboard**



The HCM<sup>©</sup> system was produced as a result of a review of hospital costing methods in the Eastern Caribbean Region. This system enables the user to adopt a costing approach that is tailored to the purpose, while ensuring that a stepwise an valid approach is used and that data standards are set, and assumptions and justifications cited to ensure the comparability of results across like hospitals and the reproducibility of studies within hospitals.

## 1.2. History

The HCM© has been piloted at Grenada General Hospital , St Georges Grenada, and has been used to cost overall hospital services in Barbados and Anguilla, data entry and the generation of unit cost estimates takes a matter of hours.

The software has also been adapted to cost the delivery of services within community based health services and stand alone clinics

## 1.3. Software Description

HCM© is a Windows based system displaying integrated (linked) data entry tables as seen in spreadsheet models through user-friendly interfaces. The linked between the tables is based on costing principals and calculations to derive total and unit costs of services. The HCM tables and results are easily transported to other spreadsheet, statistical or report writer software that is usually compatible with MSACCESS (SPSS, SAS, STATA, EXCEL, etc). [Request more information](#). At [training @aidincorporated.org](mailto:training@aidincorporated.org)

Anyone who has a basic familiarity with Windows environment with little help will be able to use HCM ©. It is not essential that the user should be able to use MSEXCEL or MSACCESS software.